

---

# CATÁLOGO

---



**Pelíkano**

# PELÍKANO

---

40 años transformando  
espacios

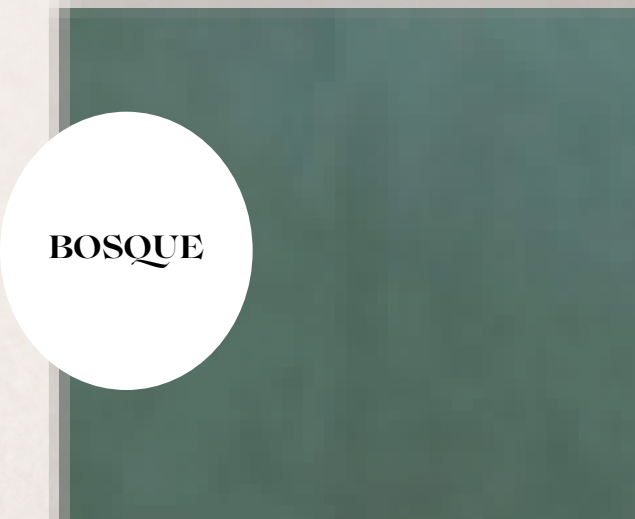
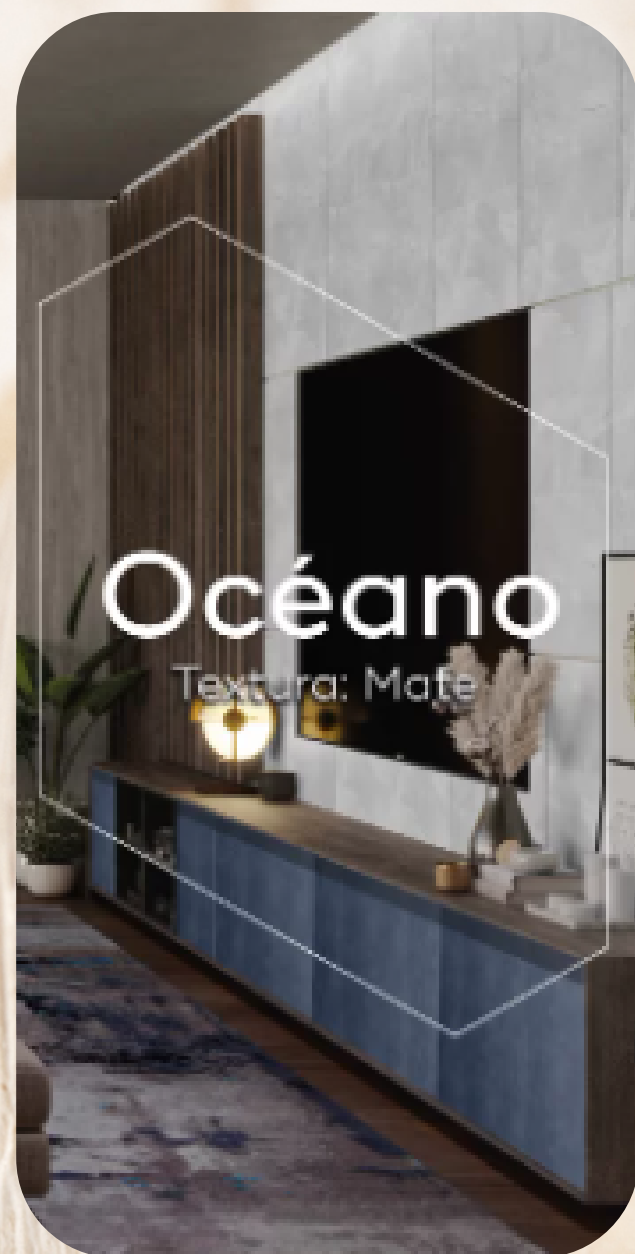
Creemos firmemente en el poder que tienen las personas para expresarse, en su anhelo para transformar y en la capacidad de convertir algo ordinario en extraordinario. Somos el impulso que convierte proyectos en realidades, el motor que da voz a los sueños y la herramienta perfecta que marca una diferencia.

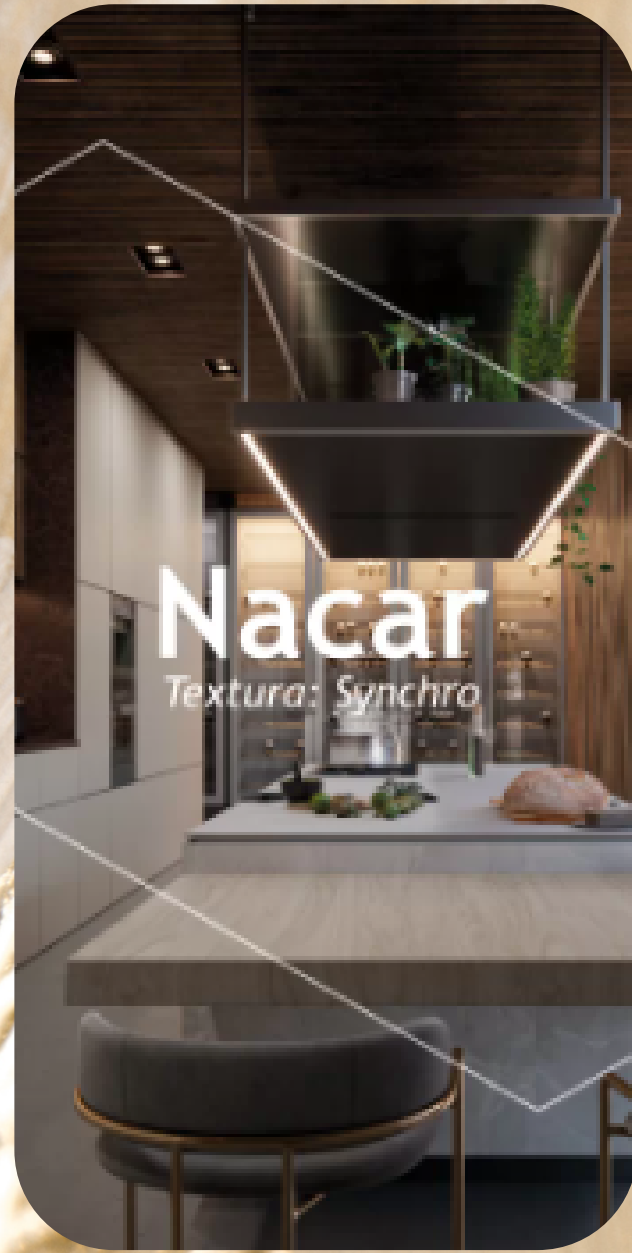


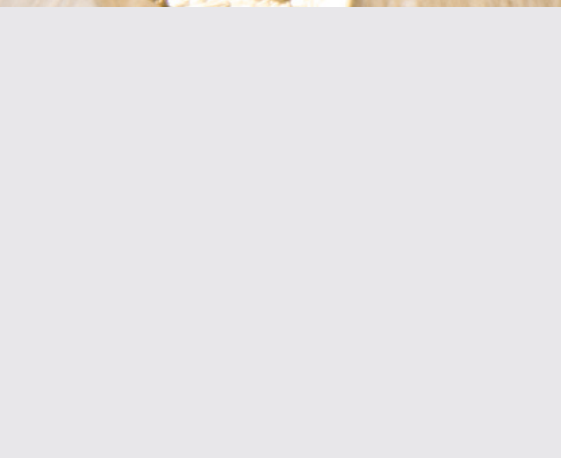
*Mavicch*

LO NUEVO

COLECCIÓN 2021 – 2022







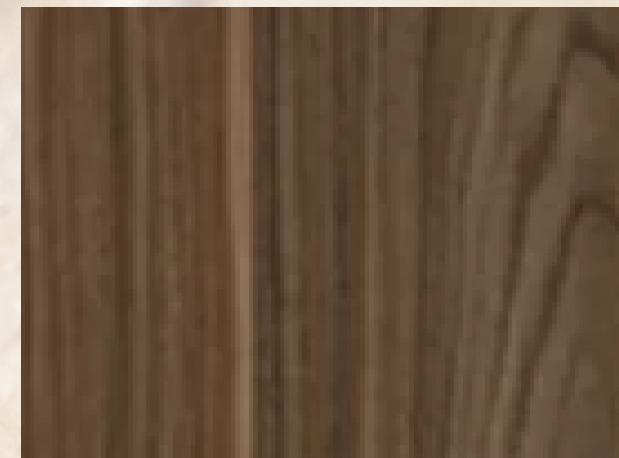
**Blanco Fantasía**



**Sapeli Maderado**



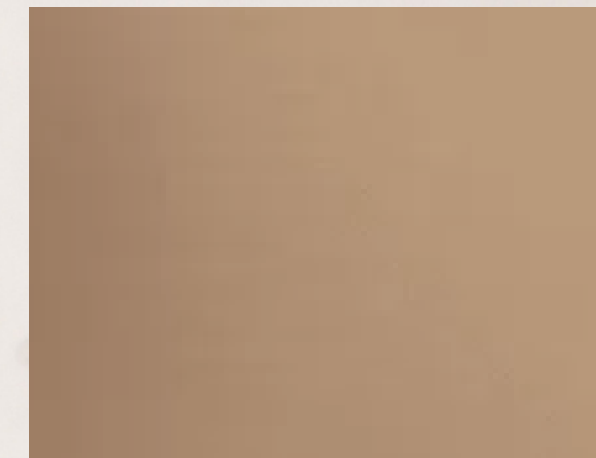
**Haya Catedral**



**Gales**



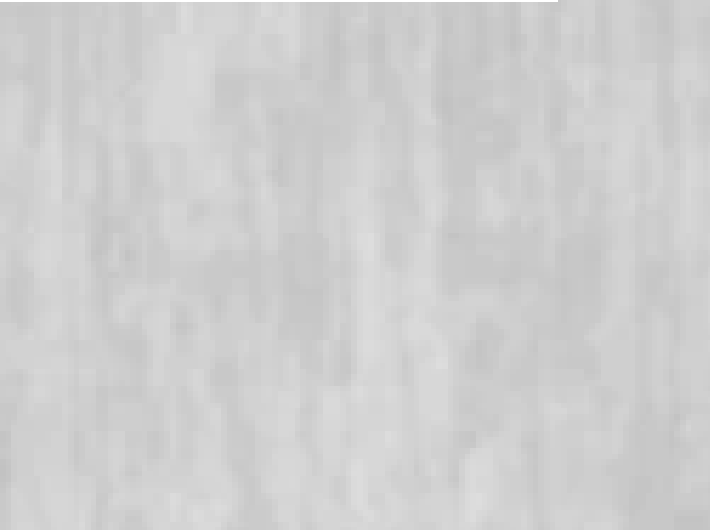
**Cedro Maderado**



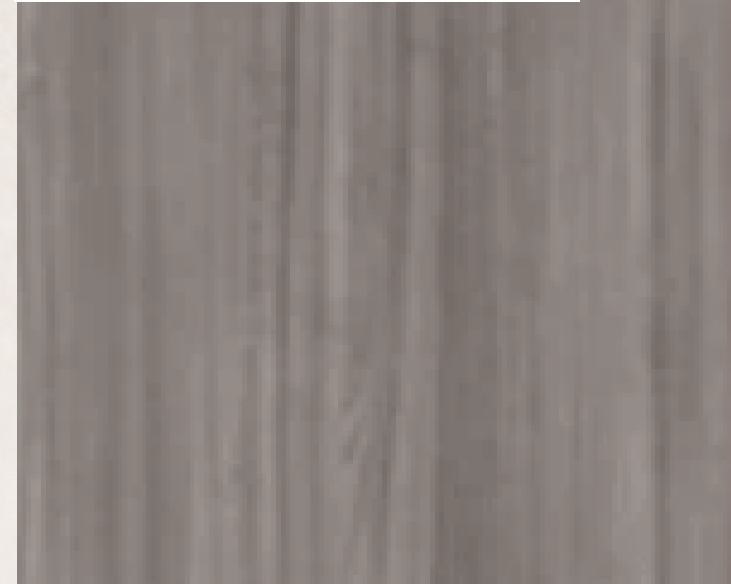
**Bronce Metalizado**

*Inspiración Atemporal*

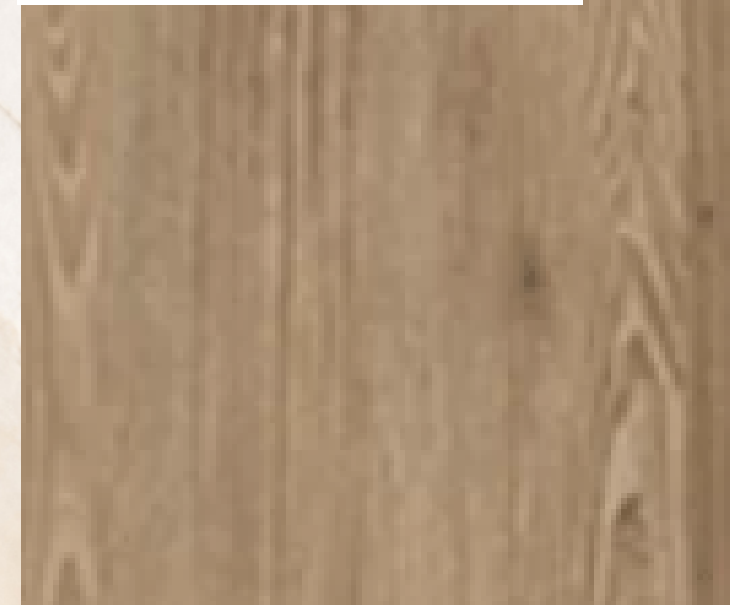
**Cemento Mate**



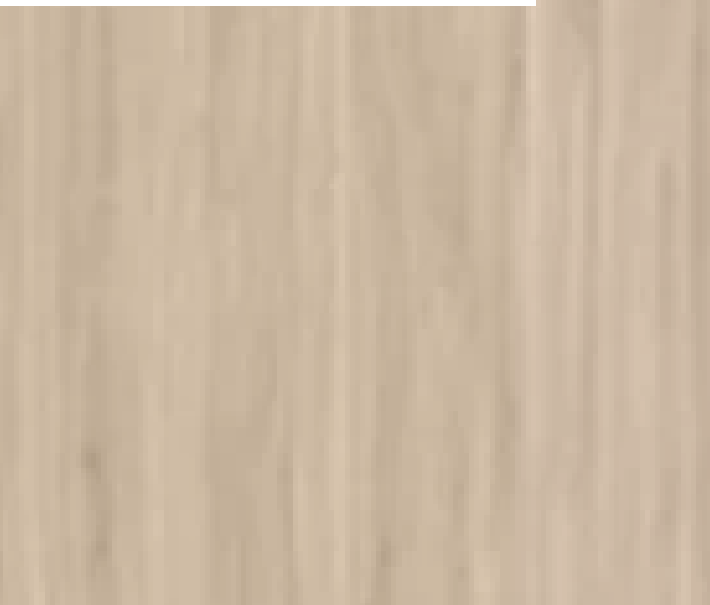
**Olivo Mate**



**Miel Poro**



**Manzano Mate**



**Plomo Mate**



**Blanco Gloss**



**Rovere Mate**



**Niebla Poro**

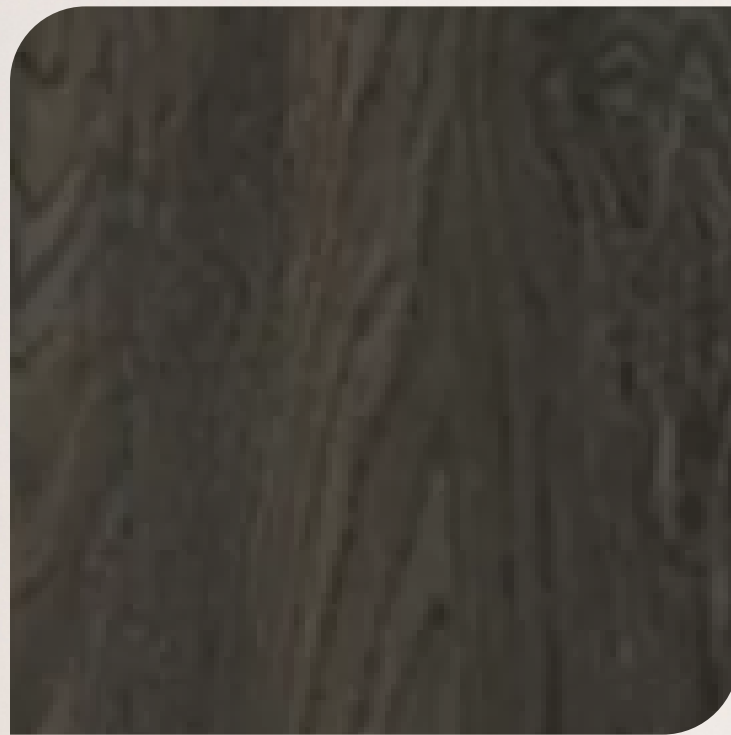


**Taupe Mate**

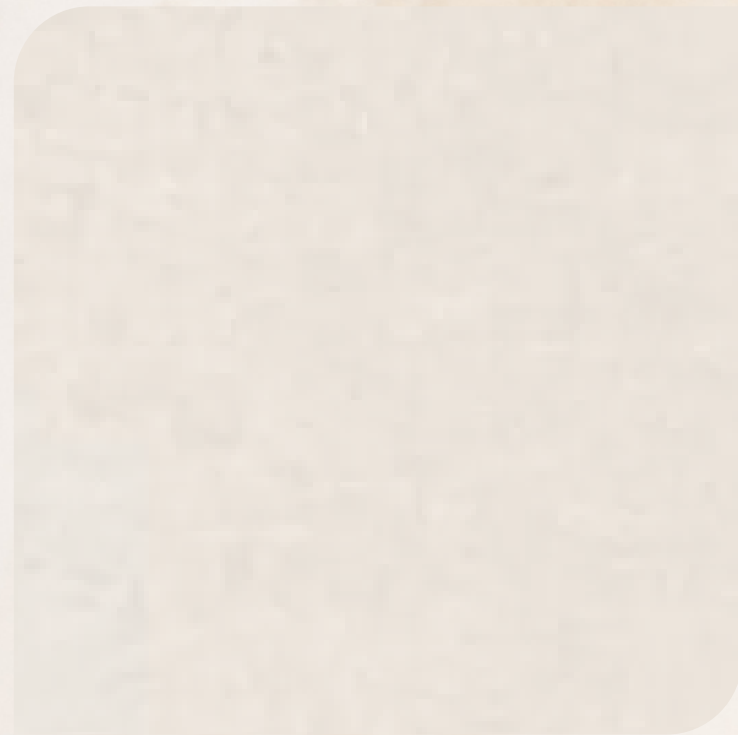


INSPIRACIÓN MODERNA

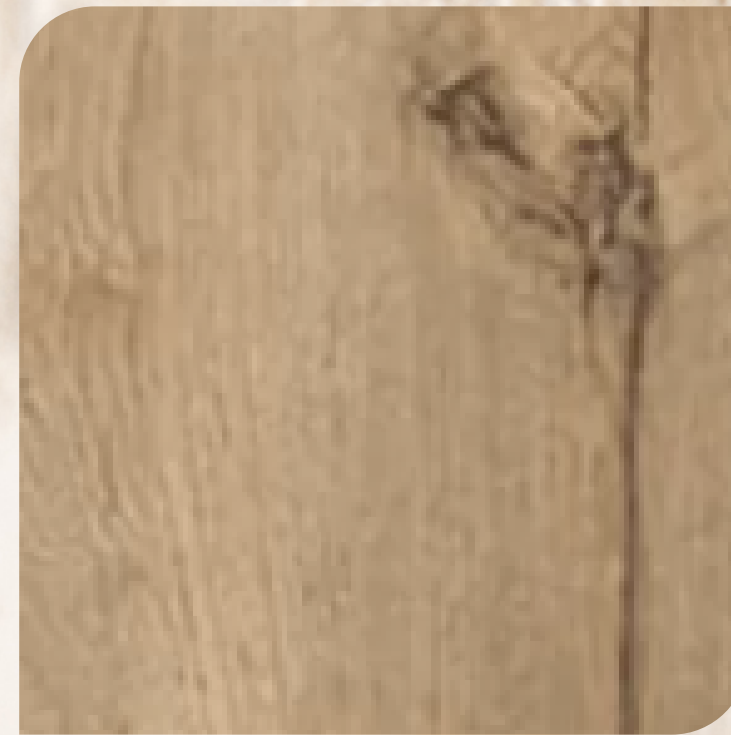
# INSPIRACIÓN NATURAL



**Carbón Poro**



**Lino Mate**



**Duna Poro**



**Artiko Poro**



**Caramelo Poro**



**Ceniza Mate**



**High Gloss Beige**



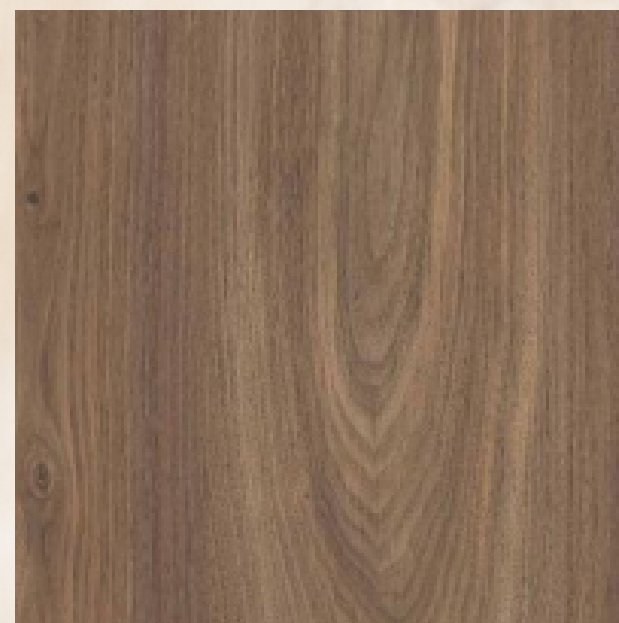
*Mavicch*



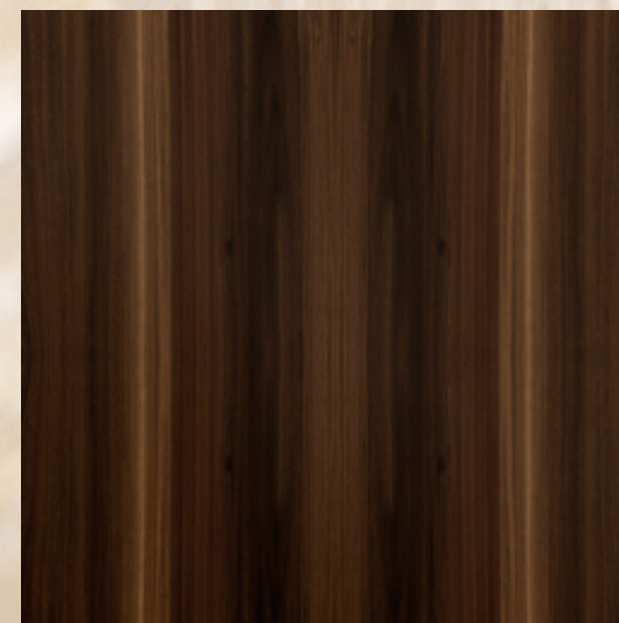
**Onix Mate**



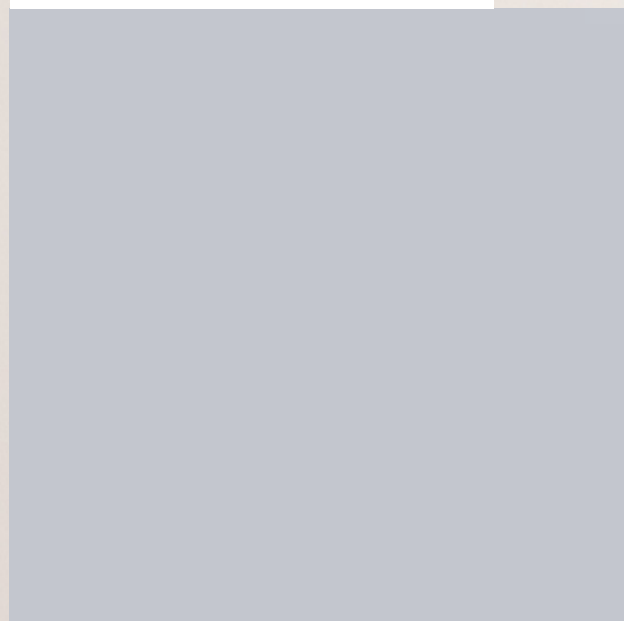
**Coñac Poro**



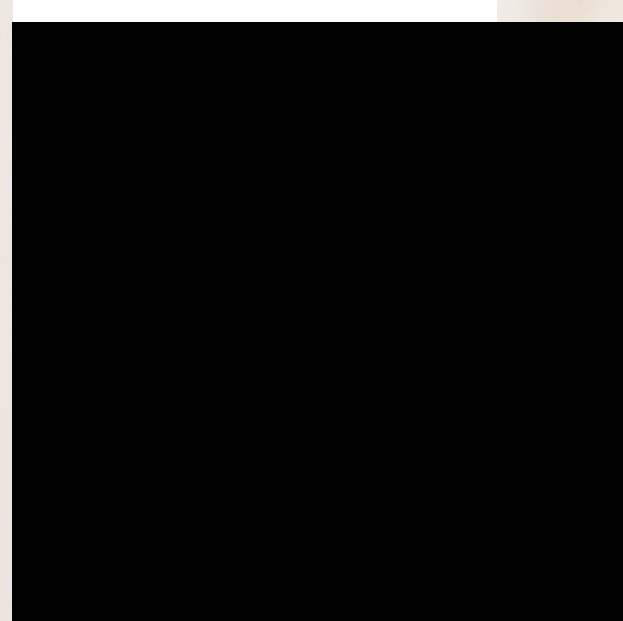
**Espresso Poro**



**Habano Poro**



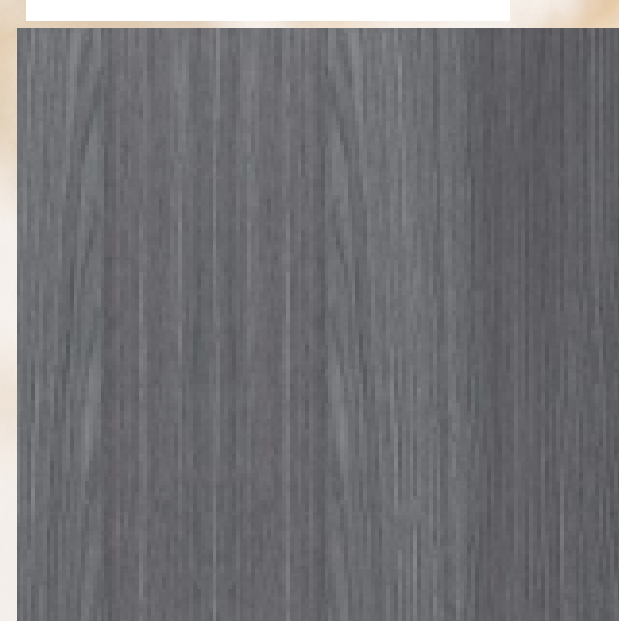
**Gris Mate**



**High Gloss Negro**



**Siena Poro**



**Roble Gris**







Para realizar pedidos pónganse en contacto en:

**Breña (Av. Tingo María 1331, Breña)**

**• 902753312 • 994219841 • 994217496 • 955551638 •**

**Correo: [ventastingomaria@mavicch.com.pe](mailto:ventastingomaria@mavicch.com.pe)**

**San Juan de Lurigancho (Av. El Sol 437, SJL) •**

**•960 509 570 • 994 217 939 • 994217631 • 960510341**

**Correo: [ventaselsol@mavicch.com.pe](mailto:ventaselsol@mavicch.com.pe)**